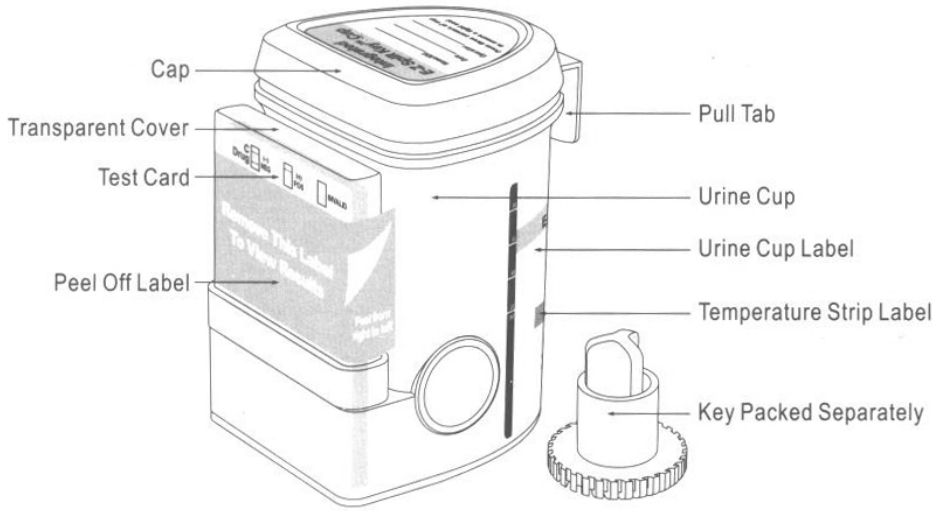
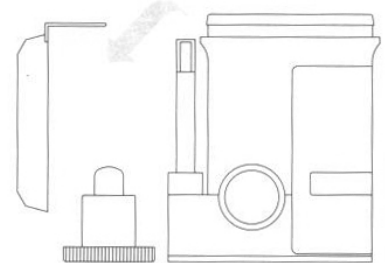




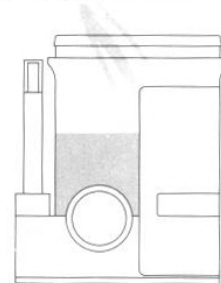
# SureScreen Diagnostics Ltd Integrated Cup Procedure



**1** Remove cap. (Key is held by technician.)



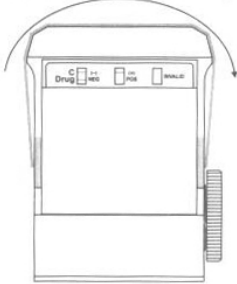
**2** Donor provides specimen and secures cap. Note: Secure cap by pressing down on all three corners.



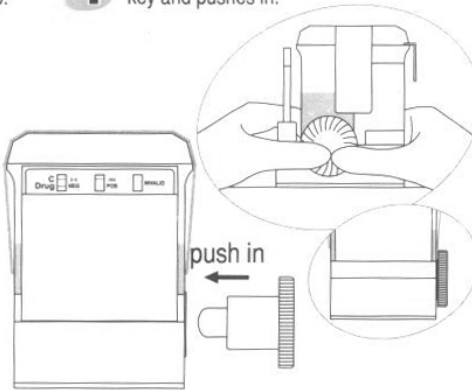
**3** Check cap for tight seal. Technician dates and initials the security seal and places security seal over cap.



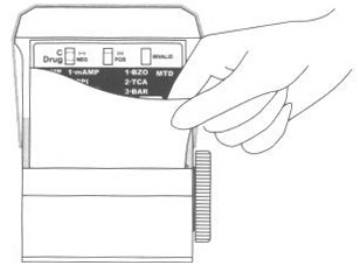
Place security seal over cup



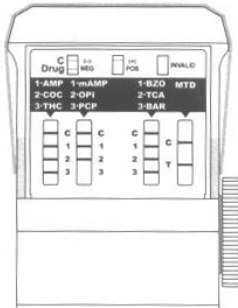
**4** On a flat surface, technician inserts test key and pushes in.



**5** Peel off the label to view results



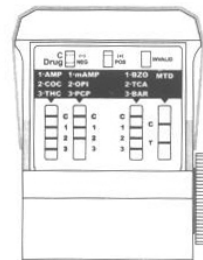
**6** Test is read while in reaction well.



Read results at 5 minutes.



**7** A photocopy of the results can be made by placing the entire cup with the card face down on the copier.



Example: test shows positive for PCP