

Carbon Reduction Report 2024

Supplier: SureScreen Diagnostics Ltd (03235601)

Publication Date: 18.11.2024



Introducing our Carbon Reduction Plan 2024

Our response to the rapidly changing world will re-shape our business. A business that:

- Makes a difference - cultivating a growth mindset that enables us to learn and adapt quickly
- Nurtures our diverse teams - a place where everyone matters
- Demonstrates excellence in all we do - we have high standards, invest in new technology, lead by example and develop our people to perform at their best
- Is always curious - we innovate and ask questions. We challenge the norms and welcome change, empowering ourselves to help shape the future

Commitment to Achieving Net Zero

SureScreen Diagnostics Ltd is committed to achieving Net Zero emissions for its UK operations by 2050.

Baseline Emissions Footprint

Baseline emissions are a record of the greenhouse gases (GHG) that have been produced in the past and were produced prior to the introduction of any strategies to reduce emissions. Baseline emissions are the reference point against which emissions reduction can be measured.

SureScreen Diagnostics is committed to delivering environmentally sustainable products. In order to understand the climate impact of our operations, SureScreen Diagnostics established a GHG inventory to record the company's scope 1 and 2 emissions in financial year 2020 – 2021 (YR21). This calculation will serve as a base year for tracking our commitment to Net Zero. Our latest GHG emissions assessment was completed for YR23. The organisational boundary for the GHG emissions reported in this Carbon Reduction Plan includes all subsidiaries of SureScreen Diagnostics Ltd. The operational boundary for the GHG emissions reported in this Carbon Reduction Plan includes all UK sites operated by SureScreen Diagnostics and its subsidiaries in the reporting year. GHG emissions were evaluated in compliance with the *Technical standard for Completion of Carbon Reduction Plans using UK government conversion factors for company reporting for greenhouse gas emissions*.

Baseline Year: June 2020 – May 2021 (YR21)

Additional details relating to the Baseline Emissions calculations

For SureScreen Diagnostics, YR22 was a period of high growth due to increased product demand during the COVID-19 pandemic. In YR23, structural changes were implemented in the business related to reducing occupancy across a number of business sites. Hence, YR21 is a more appropriate base year as it is representative of typical productivity levels at SureScreen Diagnostics.

SureScreen Diagnostics has a responsibility to actively reduce GHG emissions across its operations and value chain. Within this Carbon Reduction Plan reduction initiatives which are already implemented across the organisation are described. In addition, SureScreen Diagnostics are committed to reporting all relevant Scope 3 GHG emissions by YR25.

Baseline Year Emissions: June 2020 – May 2021 (YR21)

EMISSIONS	TOTAL (tCO ₂ e)
Scope 1	14.9
Scope 2 (location-based)	60.0
Scope 3 - Included categories: Fuel and energy-related activities not included in scope 1 and 2	12.1
Total Emissions	87.0

Current Emissions Reporting

Reporting Year: June 2022 – May 2023 (YR23)

EMISSIONS	TOTAL (tCO ₂ e)
Scope 1	8.9
Scope 2 (location-based)	209.7
Scope 3 - Included categories: Fuel and energy-related activities not included in scope 1 and 2	75.3
Total Emissions	293.9

Emissions Reduction Targets

SureScreen Diagnostics has two separate reduction targets for scope 1 and 2 emissions:

1. Short-term reduction of scope 1 and 2 emissions by 40.5% by 2030 (compared to a 2021 baseline).
2. Long-term reduction target consistent with achieving Net Zero by 2050.

Both targets are compatible with the Science-based Targets Initiative (SBTi) methodology. The emissions trajectory is presented in figure 1 below:

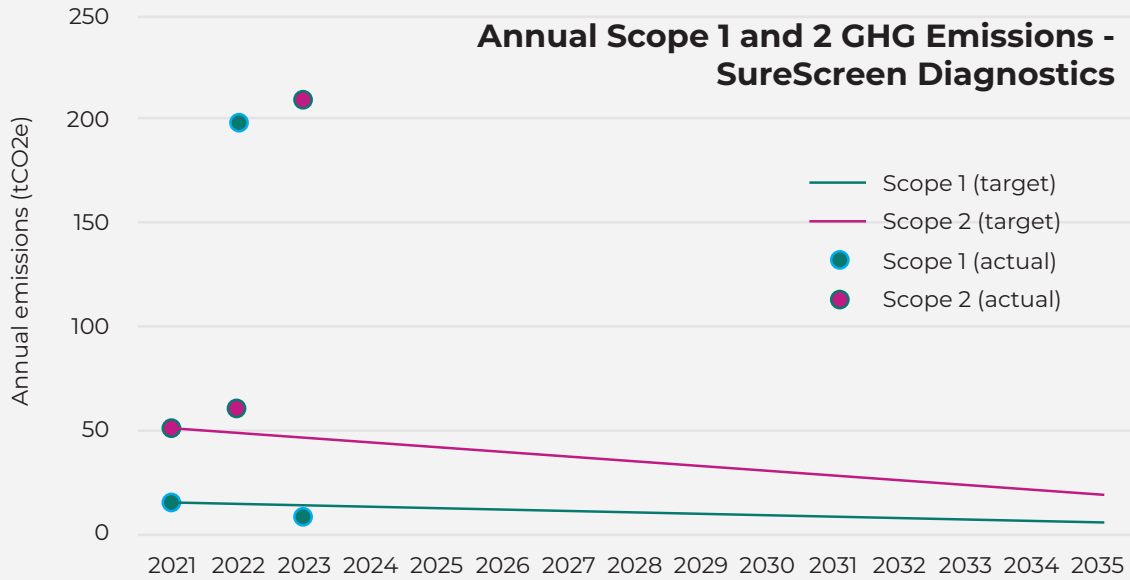
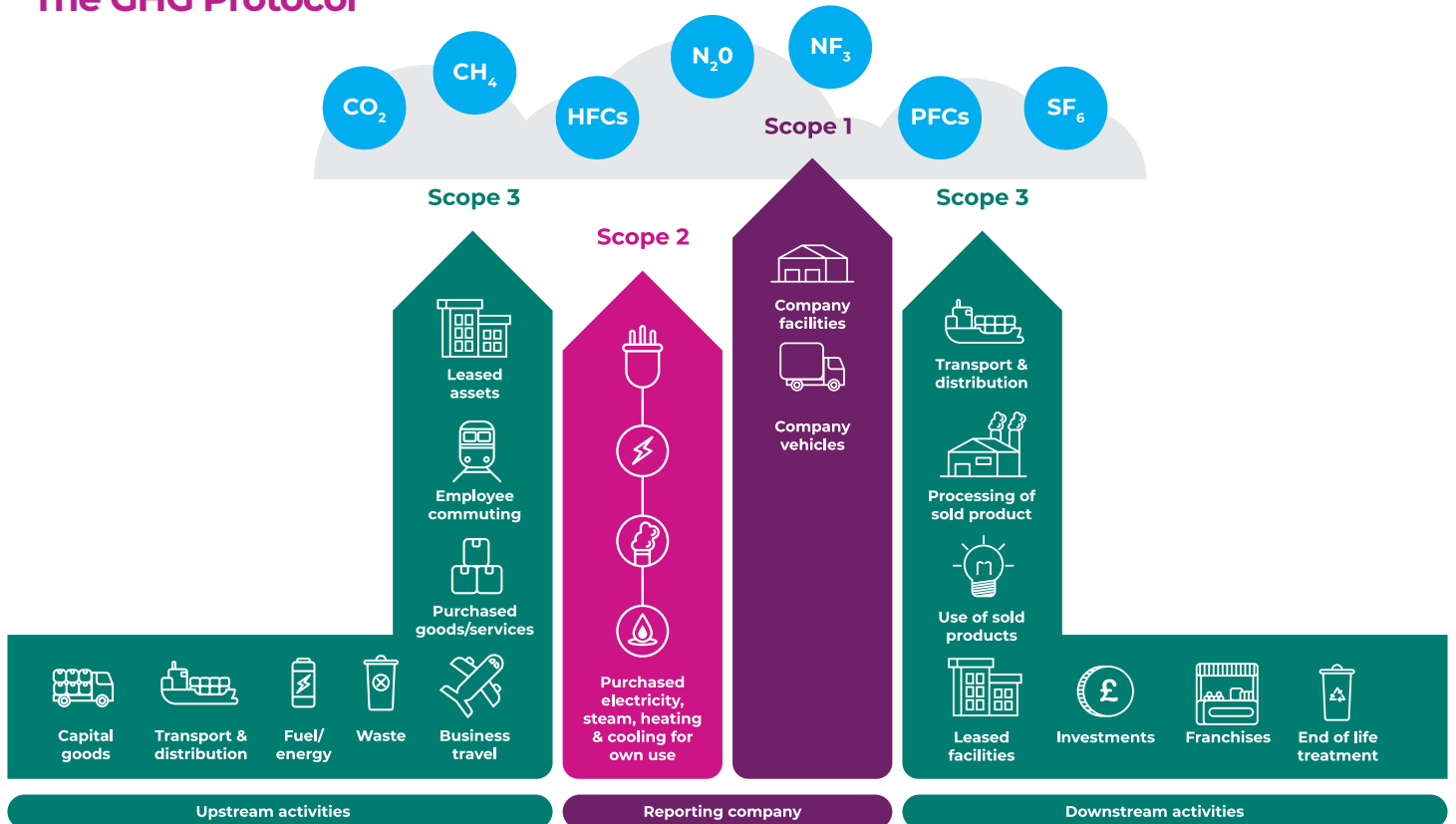


Fig 1. Scope 1 and 2 emissions reduction targets (solid lines) alongside actual emissions (circles). Trading volatility has been high in the period 2021–2023, leading to large annual changes in GHG emissions related to operational activities.

Scope 3 GHG emissions reductions targets will be set following calculation and reporting of scope 3 emissions, planned to begin in Q1 2025.

The GHG Protocol





Carbon Reduction Projects

Completed Carbon Reduction Initiatives

Scope 1

With respect to scope 1 emissions from company owned vehicles, SureScreen Diagnostics Ltd has implemented a procurement policy whereby new vehicle purchases must be either electric or plug-in hybrid, phasing out purely fossil fuel powered vehicles as they reach their expected lifetime within the next 5 years. The company has eliminated the use of a diesel-powered electricity generator, leading to a large reduction in scope 1 emissions compared to YR22.

Scope 2

As a result of year-on-year volatility in the demand for SureScreen Diagnostics' products, the company's scope 2 emissions have changed rapidly. In addition, the company has eliminated electricity self-generation from a temporary diesel generator, leading to a larger reliance on electricity imported from the National Grid and hence higher scope 2 emissions.

Scope 2 emissions from the baseline year make up 77% of the combined scope 1 and 2 emissions. Hence the companies carbon reduction activities are focused on reducing energy imported from the National Grid, through energy efficiency improvements and evaluation of renewable energy self-generation. This long-term commitment should lead to a consistent reduction in scope 2 emissions, as detailed below. The anticipated decarbonisation of the National Grid will provide further scope 2 emissions reductions in parallel to activities planned at the company's premises.

SureScreen Diagnostics made significant strategic investments in 2023 to improve energy efficiency and reduce the scope 2 emissions of their operations. The company partnered with ClearVUE.Business, a Net Zero consultancy, to support their energy efficiency focus. ClearVUE installed an energy management and carbon accounting system (ClearVUE.Zero) across SureScreen's operations. This system allows staff to proactively monitor their energy consumption, as well as identify and eliminate wasteful behaviour. In 2023, a ClearVUE energy manager performed an energy audit which identified the following inefficiencies that have been subsequently addressed by SureScreen:

- Adjustment of PIR motion detection settings
- Reduced outside lighting usage from 24/7 to match shift patterns (+ 30 mins)
- Added control for immersion heaters to heat water only during working hours

Based on data provided by the energy management system, these changes, along with other smaller improvements have already reduced consumption by **33,309 kWh** (annualised) and scope 2 emissions by **6,897 kg CO₂e**.

Scope 3

As part of the company's long-term commitment to sustainability, SureScreen will begin assessing material components of its scope 3 GHG emissions in Q1 2025. The company already has in place several policies that have a secondary effect of reducing scope 3 emissions, including employee car-pooling, remote working, and product landfill waste reduction.

Declaration and Sign Off

This Carbon Reduction Plan has been created in accordance with PPN 06/21 and the related Technical Standard for completion of Carbon Reduction Plans. Scope 1 and Scope 2 emissions have been reported in accordance with the GHG Protocol Corporate Accounting and Reporting Standard and uses the appropriate Government emissions conversion factors for greenhouse gas company reporting. The subset of reported Scope 3 emissions was calculated with reference to the GHG Protocol Corporate Value Chain (Scope 3) Standard.

This Carbon Reduction Plan has been reviewed and signed off by the board of directors.

Signed on behalf of SureScreen Diagnostics Ltd:



.....

D S Campbell - Director

Date: 18/11/2024

For more information please contact a
member of the team:

T: +44 (0)1332 365318

E: info@surescreen.com

W: surescreen.com

A: Unit 17, Eagle Park, DE21 4BF